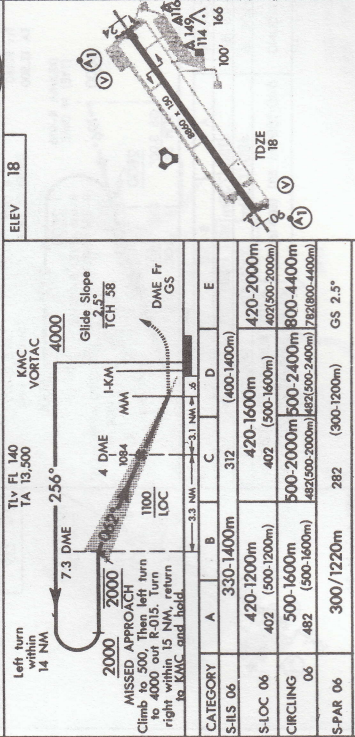
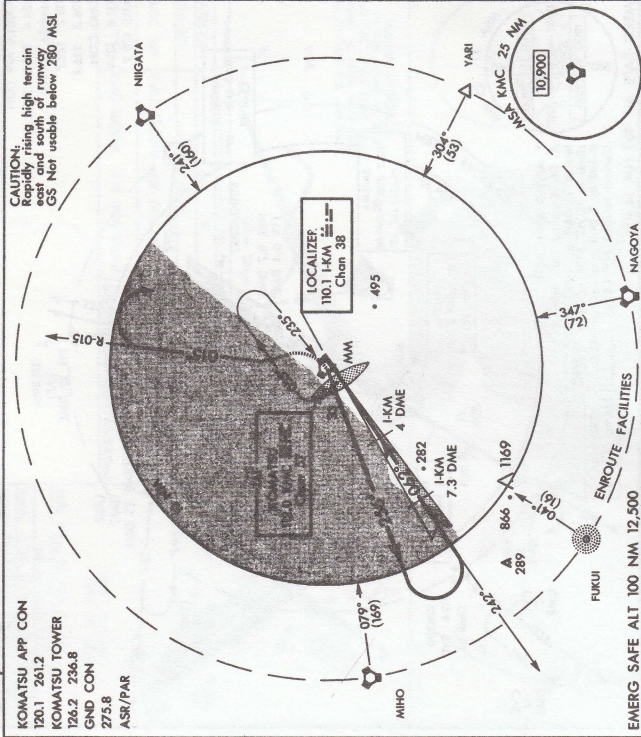


# APPROACH CHARTS

小松飛行場  
KOMATSU (RJNK)  
KOMATSU, HONSHU I, JAPAN

VOR/ILS RWY 06



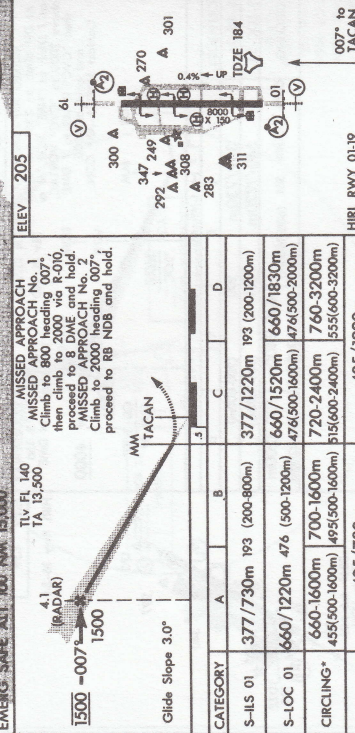
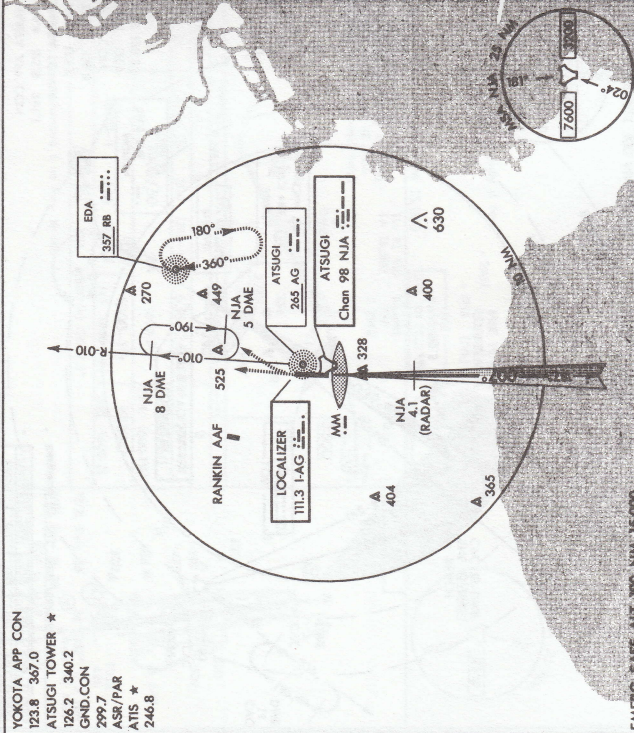
CATEGORY	A	B	C	D	E
S-ILS 06	330/1400m	312	(400/1400m)		
S-LOC 06	420/1200m	402	(500/1200m)	420-2000m	420-2000m
S-CIRCLING	500-1600m	500-1600m	500-2400m	800-4400m	800-4400m
S-PAR 06	300/1220m	282	(300/1200m)	GS 2.5°	

EMERG SAFE ALT 100 NM 12,500  
ELEV 18  
FAF to MAP 3.7 NM if MM out  
Knots 90 120 150 180 200  
Min:Sec 2:28 1:51 1:29 1:14 1:07  
KOMATSU, HONSHU I, JAPAN  
KOMATSU (RJNK)

VOR/ILS RWY 06  
36°23'N 136°25'E

厚木飛行場  
ATSUGI (RJTA)  
AYASE, HONSHU I, JAPAN

ILS



CATEGORY	A	B	C	D
S-ILS 01	377/730m 193 (200-800m)	377/1220m 193 (200-1200m)		
S-LOC 01	660/1220m 476 (500-1200m)	660/1520m 660/1830m	660/1520m	660/1830m
S-CIRCLING*	660-1600m 700-1600m	476/500-1600m 476/500-2000m	476/500-2000m	476/500-2000m
S-PAR 01	405/730m	405/1220m	405/1220m	405/1220m

EMERG SAFE ALT 100 NM 15,000  
ELEV 205  
MISSED APPROACH No. 1  
Climb to 800 heading 007°, then left turn to 15° and hold.  
MISSED APPROACH No. 2  
Climb to 2000 heading 007°, proceed to RB NDB and hold.  
HIRL RWY 01-19  
AYASE, HONSHU I, JAPAN  
ATSUGI (RJTA)

ILS  
35°27'N 139°27'E